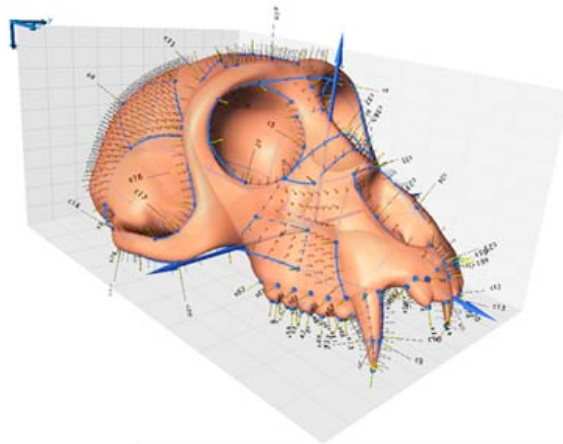


## 3D Geometric Morphometrics

10-13 January 2012, Sabadell



Course entitled to teach the main concepts of shape analysis based on 3D landmark coordinates. You will learn to manipulate 3D models and use them to collect landmark data, take measurements, and to quantify and visualize the main differences in shape.

**Instructor:** Melissa Tallman. CUNY/AMNH, New York, USA.

**When:** January 10-13, 2012. From 10:00 to 13:00 and 15:00 to 18:00

**Where:** Museum of the Institut Català de Paleontologia Miquel Crusafont, Sabadell, Barcelona.

**Course requirements.** Graduate or Postgraduate in biological sciences, basic knowledge in statistics and in personal computers. A laptop is recommended.

**Registration fees:** 270 €. Includes lunch, coffee breaks and course material. The course will be limited to 25 attendees, selected by strict inscription order.

**To register please visit our website, or send us a mail.**

[courses@icp.cat](mailto:courses@icp.cat)

[www.icp.cat](http://www.icp.cat)

Organized by: